



**Megan Chan (Sales Manager)**

**Zhejiang Lion King Ventilator Co., Ltd.**

---

**Tel. :** 0086-18167069821

**Mail:** lionking8@lkfan.com

**Website:** <http://www.lkf.com>

**Add.:** No. 688, Yangsi Road, Zhejiang Province, China

## PROFILE

Zhejiang Lion King Ventilator Co., Ltd., a professional manufacturer of various axial fans, centrifugal fans, air-conditioning fans, engineering fans, mainly consists of Research and Development Department, Production Department, Sales Department, Testing Center, and Customer Service Department.

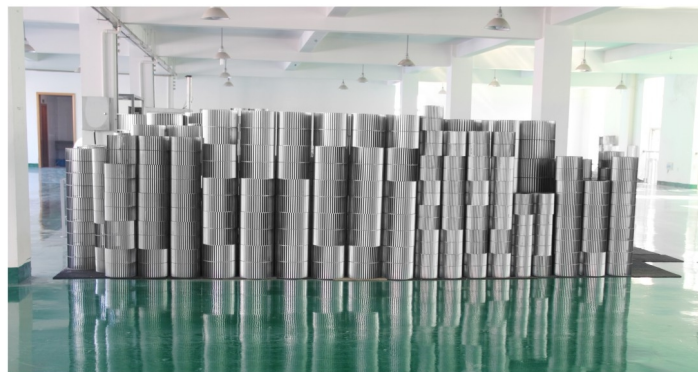
The company is located in Taizhou City, Zhejiang Province, which is near to Shanghai and Ningbo with very convenient transportation system. It has CNC lathes, CNC machining centers, CNC punch press, CNC bending machine, CNC spinning lathes, hydraulic press, dynamic balancing machine and other equipments.

The company has perfect comprehensive Testing Center, which includes facilities for air volume test, noise test, torque force and tensile force test, high and low temperature test, overspeed test, life test etc.

Relying on its Molds Technology Center and Engineering Technology Center, the company has developed forward curved multi-blades centrifugal fans, backward centrifugal fans, voluteless fans, roof fans, axial flow fans, box-type fans. These fans series include more than 100 specifications of metal fans and low noise fans.

The company attaches great importance to quality management, and was awarded the ISO9001 international quality system certification very early. At present, the "LION KING" brand has enjoyed great popularity and well-deserved reputation. Meanwhile, the products are also exported to many countries, and honored with consistent high praise and recognition by domestic and foreign customers.

The company always insists the business philosophy of "Based on Honesty, Innovation to Promote Development, Mutual Benefits Leading to Great Future .....", and serve all customers with high quality products and excellent services.



工欲善其事，必先利其器

Excellent Equipment Are Essential for Excellent Products





## 品质至上 精益求精

Quality First, Constantly Making Quality Better and Better



## 证书 Certification



## 目录 Content

LKT系列前向多翼离心风机	01	BCF系列壁式轴流风机	10
LKT Forward Curved Multi-blades Centrifugal Fan		BCF Wall-type Fan	
LKZ系列前向多翼离心风机	02	SFL系列射流风机	11
LKZ Forward Curved Multi-blades Centrifugal Fan		SFL Jet Fan	
LKB系列前向多翼离心风机	03	HL系列高效全混流风机	12
LKB Forward Curved Multi-blades Centrifugal Fan		HL High Efficient Mixed Flow Fan	
LKD系列前向多翼离心风机	04	RACF系列屋顶风机	13
LKD Forward Curved Multi-blades Centrifugal Fan		RACF Roof fan	
LKQ系列后向单板型离心风机	05	RTC系列屋顶风机	14
LKQ Backward-Curved Single Layer Plate Centrifugal Fan		RTC Roof Fan	
LKW系列无蜗壳离心风机	06	BKW系列箱式风机	15
LKW Voluteless Centrifugal Fan		BKW Box-Type Fan	
ACF-MA系列轴流风机	07	BKF系列箱式风机	16
ACF-MA Axial Flow Fan		BKF Box-type Fan	
ASF系列轴流风机	08	BK系列箱式风机	17
ASF Axial Flow Fan		BK Box-type Fan	
AMF系列轴流风机	08	LKU系列后向单进风直联驱动离心叶轮	18
AMF Axial Flow Fan		LKU Backward Inlet Direct Drive Centrifugal Impellers	
RAQ系列壁式轴流风机	09		
RAQ Wall-type Axial Flow Fan			



浙江莱恩克风机有限公司  
ZHEJIANG LION KING VENTILATOR CO., LTD.

## LKT系列前向多翼离心风机

LKT Forward Curved Multi-blades Centrifugal Fan



### 产品简介 Description

LKT系列前向多翼离心风机具有结构紧凑、效率高、噪声低等特点，是各类柜式中央空调机组、管道式空调机组及其他暖通、空调、净化、通风设备理想的配套产品。

LKT series of forward curved multi-blades centrifugal fan are characterized by compact structure, high efficiency and low noise. They are the ideal subsidiary equipment for cabinet central air-conditioning units, ducted air conditioning unit, and other heating, air-conditioning, purification and ventilating equipment.

### 技术参数 Specifications

叶轮直径：200~450mm  
风量范围：1000~40000m<sup>3</sup>/h  
全压范围：140~1000 Pa  
全压效率：50%~69%  
噪声范围：60~90dB(A) (声压级)  
驱动方式：皮带传动  
机号设置：7-7、8-8、9-7、9-9、10-8、10-10、12-9、12-12、15-11、15-15、18-13、18-18等12种机号。  
使用场合：柜式中央空调、管道式机组及其它暖通空调、净化、通风设备的配套产品。

Impeller Diameter : 200~450mm  
Air Volume Range : 1000~40000m<sup>3</sup>/h  
Total Pressure Range : 140~1000Pa  
Total Pressure Efficiency : 50~69%  
Sound Range : 60~90dB(A)  
Drive Type : Belt drive  
Model : 7-7, 8-8, 9-7, 9-9, 10-8, 10-10, 12-9, 12-12, 15-11, 15-15, 18-13, 18-18  
Applications : Subsidiary equipment for cabinet central air-conditioning units, ducted air conditioning unit, and other heating, air-conditioning, purification and ventilating equipment.



浙江莱恩克风机有限公司  
ZHEJIANG LION KING VENTILATOR CO., LTD.

## LKZ系列前向多翼离心风机

LKZ Forward Curved Multi-blades Centrifugal Fan



### 产品简介 Description

LKZ系列前向多翼离心风机是基于LKT系列风机基础上，参照国际同类产品先进技术自行开发的低噪声风机。采用单相电机直联传动，具有效率高、噪声低、调速方便、结构紧凑等特点，是变风量(VAV)空调器、管道式空调机组、及其它暖通、空调、净化设备理想的配套产品。

LKZ series of forward curved multi-blades centrifugal fan are based on LKT series. The fans are low noise fans which are newly developed according to the international advanced similar products. With single phase motor direct drive, the fans are characterized by high efficiency, low noise, easy speed regulation, compact structure. They are the ideal subsidiary equipment for variable air volume(VAV) air conditioner, ducted air conditioning unit, and other heating, purification equipment.

### 技术参数 Specifications

叶轮直径：200~320mm  
风量范围：800~5000m<sup>3</sup>/h  
全压范围：68~624Pa  
噪声范围：50~73dB(A) (声压级)  
驱动方式：单相电机直联传动  
机号设置：7-7、8-8、9-7、9-9、10-8、10-10、12-9、12-12等8种机号。可按设计要求非标产品，可采用直流无刷电机。  
使用场合：变风量(VAV)空调器、管道式空调、其它暖通、空调、净化设备的配套产品

Impeller Diameter : 200~320mm  
Air Volume Range : 800~5000m<sup>3</sup>/h  
Total Pressure Range : 68~624Pa  
Sound Range : 50~73dB(A)  
Drive Type : Single-phase motor direct drive  
Model : 7-7, 8-8, 9-7, 9-9, 10-8, 10-10, 12-9, 12-12. Non-standard products are available according to customer's requirements. Brushless DC motor can be used.  
Applications : Ideal subsidiary equipment for variable air volume (VAV) air conditioner, ducted air conditioning unit, and other heating, purification equipment.





浙江莱恩克风机有限公司  
ZHEJIANG LION KING VENTILATOR CO., LTD.

## LKB系列前向多翼离心风机

LKB Forward Curved Multi-blades Centrifugal Fan



### 产品简介 Description

LKB系列前向多翼离心风机是采用同类产品领先技术开发生产的低噪声紧凑型风机，采用外转子电机直联，经“机械工业通用机械产品检测所”检测和广大顾客使用，具有效率高、噪声低、流量大、体积小、结构紧凑等特点，是柜式空调器、变风量空调器及其它暖通、空调、净化、通风等设备理想的配套产品。

LKB series of forward curved multi-blades centrifugal fans are low noise and compact structure fans which are developed with advanced technology, adopting external rotor motor direct drive. The fans are characterized by high efficiency, low noise, large air flow, small size, compact structure. They are ideal subsidiary equipment for cabinet air-conditioning units, variable air volume (VAV) air conditioner, and other heating, air-conditioning, purification, ventilating equipment.

### 技术参数 Specifications

叶轮直径：200~500mm  
风量范围：1000~20000m<sup>3</sup>/h  
全压范围：200~850Pa  
噪声范围：60~84dB(A)（声压级）  
驱动方式：外转子电机直联转动  
机号设置：200、225、250、280、315、355、400、450、500等9种机号。  
使用场合：柜式空调器、变风量空调器，及其它暖通空调、净化、通风设备的配套产品。

Impeller Diameter : 200~500mm  
Air Volume Range : 1000~20000m<sup>3</sup>/h  
Total Pressure Range : 200~850Pa  
Sound Range : 60~84 dB(A)  
Drive Type : External rotor motor direct drive  
Model : 200, 225, 250, 280, 315, 355, 400, 450, 500  
Applications : Ideal subsidiary equipment for cabinet air-conditioning units, variable air volume(VAV) air conditioner, and other heating, air-conditioning, purification equipment.



浙江莱恩克风机有限公司  
ZHEJIANG LION KING VENTILATOR CO., LTD.

## LKD系列前向多翼离心风机

LKD Forward Curved Multi-blades Centrifugal Fan



### 产品简介 Description

LKD系列前向多翼离心风机是本公司自主研发的新产品，是一种采用特殊的曲线叶型叶片组成的离心风机，其风量范围达2500~100000m<sup>3</sup>/h。流道内空气被强力加速，大幅度降低叶轮内部涡流脱落，消除了叶片入口处的涡流，明显降低了噪声，大大提高了风机的效率。

LKD series of forward curved multi-blades centrifugal fans are newly developed products which adopt special curved leaf shape blades. The air volume range can reach 2500~100000m<sup>3</sup>/h. The air inside the flow channel is strongly accelerated, greatly reducing the vortex shedding in the impeller and eliminating the vortex at the entrance of the blade, which will significantly reduce the noise and greatly improve the efficiency of the fan.

### 技术参数 Specifications

叶轮直径：200~1000mm  
风量范围：2500~100000m<sup>3</sup>/h  
全压范围：200~1500Pa  
全压效率：58~68%  
噪声范围：70~110dB(A)（声压级）  
驱动方式：皮带转动  
机号设置：200、225、250、280、315、355、400、450、500、560、630、710、800、900、1000等15种机号。  
使用场合：组合式空调器及其它暖通空调、净化、通风设备的配套产品。

Impeller Diameter : 200~1000mm  
Air Volume Range : 2500~100000m<sup>3</sup>/h  
Total Pressure Range : 200~1500Pa  
Total Pressure Efficiency : 58~68%  
Noise Range : 70~110dB(A)  
Drive Type : Belt drive  
Model : 200, 225, 250, 280, 315, 355, 400, 450, 500, 560, 630, 710, 800, 900, 1000  
Applications : Ideal subsidiary equipment for modular air conditioning units, and other heating, air-conditioning, purification, ventilating equipment.



浙江莱恩克风机有限公司  
ZHEJIANG LION KING VENTILATOR CO., LTD.

## LKQ系列后向单板型离心风机

LKQ Backward-Curved Single Layer Plate Centrifugal Fan



### 产品简介 Description

LKQ系列后向单板型离心风机是本公司自主研发的新产品，是一种采用后向单板型叶片组成的离心风机，具有良好的空气动力学特性，效率高，强度高，低噪声，其风量范围达900~120000m³/h，大大提高了风机的效率。

LKQ series of backward-curved single layer plate centrifugal fans are newly developed products which adopt backward plate blades, with good aerodynamic characteristics, high efficiency, good strength, low noise. The air volume range can reach 900~120000 m³/h, greatly improving the efficiency.

### 技术参数 Specifications

叶轮直径：280~1000mm  
风量范围：900~120000m³/h  
全压范围：120~3000Pa  
全压效率：64~80%  
噪声范围：80~110dB(A) (声压级)  
驱动方式：皮带传动  
机号设置：280、315、355、400、450、500、560、630、710、800、900、1000等12种机号。  
使用场合：各类中央空调机组及其它暖通空调、净化、通风设备的配套产品。

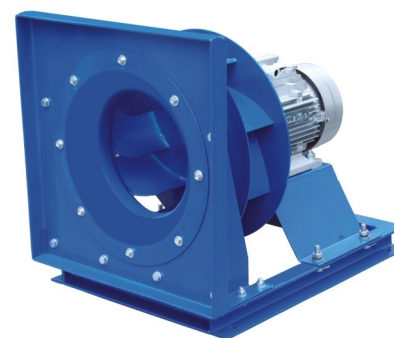
Impeller Diameter: 280~1000mm  
Air Volume Range: 900~120000m³/h  
Total Pressure Range: 120~3000Pa  
Total Pressure Efficiency: 64~80%  
Sound Rate: 80~110dB(A)  
Drive Type: Belt drive  
Model: 280, 315, 355, 400, 450, 500, 560, 630, 710, 800, 900, 1000  
Applications: As ideal subsidiary equipment for various subsidiary conditioning units, heating, air-conditioning, cleansing and ventilating equipments.



浙江莱恩克风机有限公司  
ZHEJIANG LION KING VENTILATOR CO., LTD.

## LKW系列无蜗壳离心风机

LKW Voluteless Centrifugal Fan



### 产品简介 Description

LKW系列无蜗壳离心风机采用国际先进技术自行开发设计，该系列共有13种规格风机，流量范围从500m³/h~70000m³/h，具有结构紧凑、效率高、噪声低等特点，是各类柜式中央空调机组及其他暖通、空调、净化、通风设备理想的配套产品。

LKW series of voluteless centrifugal fans with the use of the international advanced technology to develop its own design, the series a total of 13 kinds of wind turbine, flow range from 500m³/h to 70000m³/h. Has a structure compact structure, high efficiency, low noise, various types of central air-conditioning units and other HVAC cabinet, Air conditioning, purification, ventilating equipment.

### 技术参数 Specifications

叶轮直径：250~1000mm  
风量范围：500~70000m³/h  
全压范围：120~2500Pa  
全压效率：64~70%  
噪声范围：80~110dB(A) (声功率级)  
驱动方式：电机直驱或皮带传动  
机号设置：250、280、315、355、400、450、500、560、630、710、800、900、1000等13种机号。  
使用场合：各类柜式中央空调机组及其它暖通空调、净化、通风设备的配套产品。

Impeller Diameter: 250~1000mm  
Air Volume Range: 500~70000m³/h  
Total Pressure Range: 120~2500Pa  
Total Pressure Efficiency: 64~70%  
Sound Range: 80~110dB(A)  
Drive Type: Motor direct drive or Belt drive  
Model: 250, 280, 315, 355, 400, 450, 500, 560, 630, 710, 800, 900, 1000  
Applications: Subsidiary equipment for various central air-conditioning units, and other heating, air-conditioning, purification, ventilating equipment.



浙江莱恩克风机有限公司  
ZHEJIANG LION KING VENTILATOR CO., LTD.

## ACF-MA系列轴流风机 ACF-MA Axial Flow Fan



### 产品简介 Description

ACF-MA系列轴流风机的电机和风叶都在一个圆筒里，外形就是一个筒形，用于局部通风，轴流轮毂式叶轮、采用高温电机，效率高、噪声低、结构合理、体积小、安装方便。通风换气效果明显，安全，可以接风筒把风送到指定的区域。

ACF-MA series of axial flow fans is in a cylinder, the outside view is a cylinder shape. It can be used for local ventilation. Adopting axial flow wheel hub type impeller and high temperature resistant motor, the fan is characterized by high efficiency, low noise, reasonable structure, small size, easy installation. The ventilation effect is obviously good and safe. It can be connected with ventilation duct to blow the air to the designated area.

### 技术参数 Specifications

叶轮直径：315~1600mm

风量：230000m<sup>3</sup>/h

工作温度：280℃的高温烟气场合，可连续运行0.5小时以上

使用场合：主要用于工程建筑特殊场合（如防爆防腐等环境）  
的通风及消防排烟

Impeller Diameter: 315~1600mm

Air Volume Range: 230000m<sup>3</sup>/h

Working Temperature: Work continuously more than 0.5 hours in 280℃ gas fume.

Applications: Mainly used for ventilation and fire fighting exhaust systems at special places of engineering buildings (such as explosion-proof or anti-corrosion environment)



浙江莱恩克风机有限公司  
ZHEJIANG LION KING VENTILATOR CO., LTD.

## ASF系列轴流风机 ASF Axial Flow Fan



### 产品简介 Description

ASF系列轴流风机具有效率高、噪声低、适用性强、可靠、稳定等特点。拥有环氧树脂静电喷涂外壳，十年不腐不锈。该系列风机主要用于工程建筑和特殊场合（如防爆、防腐等环境）的通风及消防排烟。

ASF series of axial flow fans are characterized by high efficiency, low noise, wide applicability, good reliability and strong stability. Treated by electrostatic spraying of epoxy resin, the housing case can't corrode in ten years. The fans are mainly used in ventilation and fire-fighting smoke evacuation in engineering constructions and special circumstances (such as explosion-proof environment or anti-corrosion environment).

### 技术参数 Specifications

叶轮直径：350~1600mm

风量范围：2600~180000m<sup>3</sup>/h

静压范围：50~1600Pa

驱动形式：直联驱动

使用场合：大流量普通送排风、消防排烟等

Impeller Diameter: 350~1600mm

Air Volume Range: 2600~180000m<sup>3</sup>/h

Pressure Range: 50~1600Pa

Drive Type: Direct drive

Applications: Large air volume ventilation, fire-fighting smoke evacuation

## AMF系列轴流风机 AMF Axial Flow Fan



### 产品简介 Description

机翼型铸铝叶轮，效率高，噪声低；先进工艺一体成型，强度高，一致性好；平衡等级高达G2.5(ISO1940)，结构紧凑，节省安装空间。

直联驱动：无易损件，免维护

Cast aluminum airfoil axial impeller, large volume, low noise and high efficiency. Advanced forming technology, high intensity and consistency. Balancing level up to G2.5(ISO1940). Compact structure, saving space of installation.

Direct drive: no easily damaged parts, no maintenance need.

### 技术参数 Specifications

风量范围：0~230,000m<sup>3</sup>/h

静压范围：0~2,000Pa

使用场合：管道送排风、防爆送排风、消防排烟等

Air Volume Range: 0~230,000 m<sup>3</sup>/h

Static Pressure Range: 0~2,000 Pa

Applications: Pipeline supply, explosion-proof supply/exhaust, smoke removal duty.





浙江莱恩克风机有限公司  
ZHEJIANG LION KING VENTILATOR CO., LTD.

## RAQ系列壁式轴流风机 RAQ Wall-type Axial Flow Fan



### 产品简介 Description

RAQ系列壁式轴流风机由本公司自行设计开发，具有效率高、噪声低、结构紧凑、安装方便、运行可靠的特点。可广泛用于冷凝器、管道风机、屋顶风机等制冷通风行业。

RAQ series of wall-type axial flow fans are designed and developed by our company. With high efficiency, low noise, compact structure, easy installation, reliable operation, the fans are widely used in refrigeration and ventilation industry, such as condensers, duct fans, roof fans etc.

### 技术参数 Specifications

叶轮直径：200~800mm  
风量范围：500~25000m<sup>3</sup>/h  
压力范围：压力高达200Pa  
工作温度：-20℃~40℃  
驱动形式：直联驱动  
安装形式：边墙安装  
使用场合：大流量、中低压通风场合

Impeller Diameter : 200~800mm  
Air Volume Range : 500~25000m<sup>3</sup>/h  
Pressure Range : Up to 200Pa  
Working Temperature : -20℃ ~ 40℃  
Drive Type : Direct drive  
Installation Type : Sidewall installation  
Applications : Suitable for places where large air volume, medium and low pressure ventilation are required



浙江莱恩克风机有限公司  
ZHEJIANG LION KING VENTILATOR CO., LTD.

## BCF系列壁式轴流风机 BCF Wall-type Fan



### 产品简介 Description

BCF系列壁式轴流风机采用方形外壳，极易边墙安装，前掠型叶片，渐进切削空气，效率高，噪音低直联驱动，无易损件，免维护，外形美观精致更与现代建筑匹配，适用于工业厂房边墙排风送风等，涂装车间边墙送排风、易燃易爆气体排风等。

BCF series of wall-type fans, adopting square housing, is extremely convenient for installation on sidewall. The sweepforward type blades gradually cutting air, high efficiency, low noise, direct drive, without wearing parts, maintenance free, and beautiful appearance. The fans are more matching with modern buildings, and suitable for sidewall ventilation in industrial workshop and painting workshop. The fans are also suitable for air exhaust in combustible and explosible gas environment.

### 技术参数 Specifications

叶轮直径：200~800mm  
风量范围：500~25000m<sup>3</sup>/h  
压力范围：压力高达200Pa  
驱动形式：直联驱动  
安装形式：边墙安装  
使用场合：大流量、中低压通风场合

Impeller Diameter: 200~800mm  
Air Volume Range: 500~25000m<sup>3</sup>/h  
Pressure Range: Up to 200Pa  
Drive Type: Direct drive  
Installation Type: Sidewall installation  
Applications: Suitable for places where large air volume, medium and low pressure ventilation are required



浙江莱恩克风机有限公司  
ZHEJIANG LION KING VENTILATOR CO., LTD.

## SFL系列射流风机 SFL Jet Fan



### 产品简介 Description

SFL系列射流风机分为单向轴流风机和双向可逆轴流风机两大类。采用先进的工艺和优良的材料，具有高效、低噪、耐腐蚀、可靠性、经济性等优点，风机的各项指标完全适用于各类隧道、地铁、封闭的停车场和水利大坝工程等。

SFL series of jet fans can be divided into two categories: one-way axial flow fan and two-way reversible axial flow fan. With advanced processing technology and fine materials, the fan is featured with high efficiency, low noise, corrosion resistance, reliability and economical efficiency. Each technical index of the fan is perfectly applicable to various tunnels, subways, enclosing parking lots and water dams etc.

### 技术参数 Specifications

叶轮直径：315~1600mm  
风量范围：10000~200000m<sup>3</sup>/h  
压力范围：压力高达1200Pa  
推力范围：50~2000N  
工作温度：250℃的高温烟气场合，可连续运行1小时以上  
驱动形式：直联驱动  
安装形式：悬吊式固定  
使用场合：地铁、隧道排风

Impeller Diameter: 315~1600mm  
Air Volume Range: 10000~200000 m<sup>3</sup>/h  
Pressure Range: Up to 1200Pa  
Thrust Range: 50~2000N  
Working Temperature: Work continuously more than 1 hour in 250℃ gas fume.  
Drive Type: Direct drive  
Installation: Suspensory fixation  
Applications: Ventilation in subways, tunnels etc.



浙江莱恩克风机有限公司  
ZHEJIANG LION KING VENTILATOR CO., LTD.

## HL系列高效全混流风机 HL High Efficient Mixed Flow Fan



### 产品简介 Description

HL系列高效全混流风机流量从800 m<sup>3</sup>/h ~100000 m<sup>3</sup>/h，具有结构紧凑、强度高、效率高、噪声低等特点。主要用于工程建筑和特殊场合（如防爆、防腐等环境）的通风及消防排烟。

HL series of high efficient mixed flow fans, with air volume of 800 m<sup>3</sup>/h ~ 100000 m<sup>3</sup>/h, are characterized by compact structure, high strength, high efficiency and low noise. The fans are mainly used for ventilation and fire-fighting smoke evacuation in engineering constructions and special circumstances (such as explosion-proof environment or anti-corrosion environment).

### 技术参数 Specifications

叶轮直径：400~1250 mm  
风量范围：800~100000 m<sup>3</sup>/h  
静压范围：50~1600 Pa  
驱动形式：直联驱动、皮带驱动  
使用场合：高效管道中压送排风、防爆送排风、消防排烟等。

Impeller Diameter: 400-1250 mm  
Air Volume Range: 800-100000 m<sup>3</sup>/h  
Pressure Range: 50~1600 Pa  
Drive Type: Direct drive, belt drive  
Applications: High efficient medium pressure duct ventilation, explosion-proof ventilation, fire-fighting smoke evacuation



浙江莱恩克风机有限公司  
ZHEJIANG LION KING VENTILATOR CO., LTD.

## RACF系列屋顶风机

RACF Roof fan



### 产品简介 Description

RACF系列屋顶风机由本公司自行开发，风机在烟气温度达到280℃的场合，连续运行0.5小时以上，主要用于工厂屋顶排风或消防排风等场合。

RACF series of roof fans can continuously operate more than 0.5 hours in the gas fume with temperature up to 280℃. The fans are popularly used for roof ventilation or fire-fighting smoke evacuation in factory buildings.

### 技术参数 Specifications

叶轮直径：315~1250mm  
风量范围：1000~10000m<sup>3</sup>/h  
压力范围：压力高达1200Pa  
工作温度：280℃的高温烟气场合，可连续运行0.5小时以上  
驱动形式：直联驱动  
安装形式：可接圆形或方形法兰或泛水安装  
使用场合：消防排烟、厂房通排风、隔爆通排风

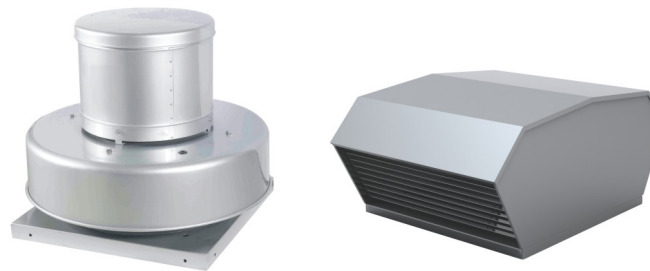
Impeller Diameter: 315~1250mm  
Air Volume Range: 1000~10000m<sup>3</sup>/h  
Pressure Range: Up to 1200Pa  
Working Temperature: Work continuously more than 0.5 hours in 280℃ gas fume  
Drive Type: Direct drive  
Installation: Installed with a circular or square flange, or flashing installation  
Applications: Fire-fighting smoke evacuation, workshop roof ventilation, explosion-proof ventilation



浙江莱恩克风机有限公司  
ZHEJIANG LION KING VENTILATOR CO., LTD.

## RTC系列屋顶风机

RTC Roof Fan



### 产品简介 Description

RTC系列屋顶风机，是我公司采用在国内率先开发的无蜗壳风机的高效叶轮，配合航空级高强度合金铝材质机壳设计而来。产品结构紧凑外形美观、气体流动均匀。风机可安装在各种屋顶，可接圆形或方形法兰或泛水安装，是厂房屋顶排风的首选产品。

RTC series of roof fans are designed by adopting our first-developed efficient impeller for voluteless fan and aircraft grade high strength aluminum alloy housing case. The fan is featured with compact structure, perfect appearance, uniform airflow. It can be installed on all kinds of roof with a circular or square flange, or for flashing installation. It's the first choice roof fan for factory buildings.

### 技术参数 Specifications

叶轮直径：315~1000mm  
风量范围：1000~60000m<sup>3</sup>/h  
压力范围：压力高达1200Pa  
工作温度：280℃的高温烟气场合，可连续运行0.5小时以上  
驱动形式：直联驱动  
安装形式：可接圆形或方形法兰或泛水安装  
使用场合：消防排烟、厂房通排风、隔爆通排风

Impeller Diameter: 315~1000 mm  
Air Volume Range: 1000~60000m<sup>3</sup>/h  
Pressure Range: Up to 1200Pa  
Working Temperature: Work continuously more than 0.5 hours in 280℃ gas fume  
Drive Type: Direct drive  
Installation Type: Installed with a circular or square flange, or flashing installation  
Applications: Fire-fighting smoke evacuation, workshop roof ventilation, explosion-proof ventilation





浙江莱恩克风机有限公司  
ZHEJIANG LION KING VENTILATOR CO., LTD.

## BKW系列箱式风机

BKW Box-Type Fan



### 产品简介 Description

BKW系列箱式风机是过滤净化系统、管道送排风的新一代节能型产品，它由单吸式高效后弯斜式离心叶轮、消声箱体、低噪音风机专用电机组成。具有效率高、噪声低、结构简单、外形美观、安装维修方便等特点。

BKW series of box-type fans are new generation of energy-saving products for filtration purification system and ducted air exhaust system. The fan consists of a single suction efficient backward curved tilting centrifugal impeller, silencing box, low noise fan motor. It is featured with high efficiency, low noise, simple structure, perfect appearance, easy installation and maintenance etc.

### 技术参数 Specifications

叶轮直径：250~1000mm  
风量范围：1000~60000m<sup>3</sup>/h  
压力范围：压力高达1500Pa  
工作温度：-20℃~40℃  
驱动形式：电机直驱  
安装形式：座装、吊装  
使用场合：静音送排风、净化送排风

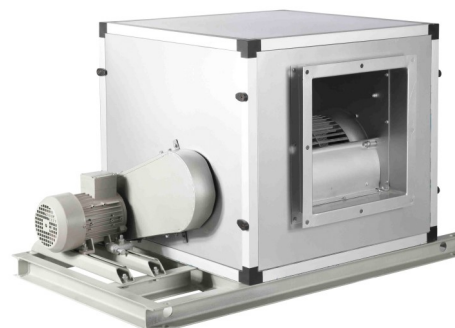
Impeller Diameter: 250~1000mm  
Air Volume Range: 1000~60000m<sup>3</sup>/h  
Pressure Range: Up to 1500Pa  
Working Temperature: -20℃~40℃  
Drive Type: Motor direct drive  
Installation: Seat installation, hoisting installation  
Applications: Mute ventilation, purification ventilation



浙江莱恩克风机有限公司  
ZHEJIANG LION KING VENTILATOR CO., LTD.

## BKF系列箱式风机

BKF Box-type Fan



### 产品简介 Description

BKF系列箱式风机，风机在烟气温度达到280℃的场合，连续运行0.5小时以上，是高层建筑通风及消防排烟两用的新型产品。

BKF series of box-type fans can continuously operate more than 0.5 hours in the gas fume with temperature up to 280℃. The fans are new products for ventilation and fire-fighting smoke evacuation in high-rise buildings.

### 技术参数 Specifications

叶轮直径：250~1000mm  
风量范围：1000~60000m<sup>3</sup>/h  
压力范围：压力高达1500Pa  
工作温度：-20℃~40℃  
驱动形式：电机直驱  
安装形式：座装、吊装  
使用场合：消防排烟、隔爆送排风

Impeller Diameter: 250~1000mm  
Air Volume Range: 1000~60000m<sup>3</sup>/h  
Pressure Range: Up to 1500Pa  
Working Temperature: -20℃~40℃  
Drive Type: Motor direct drive  
Installation: Seat installation, hoisting installation  
Applications: Fire-fighting smoke evacuation, explosion-proof ventilation



浙江莱恩克风机有限公司  
ZHEJIANG LION KING VENTILATOR CO., LTD.

## BK系列箱式风机 BK Box-type Fan



### 产品简介 Description

BK系列箱式风机系列引进德国、英国先进技术，通过本公司吸收、消化、提高而研发成功的箱体式离心风机。具有效率高、噪声低、性能优良、结构新颖、安装方便等优点。

BK series of box-type fans are developed by our company on basis of advanced technologies from Germany and UK. The fans are characterized by high efficiency, low noise, excellent performance, novel structure, easy installation etc.

### 技术参数 Specifications

叶轮直径：200~1400mm  
风量范围：1000~240000m<sup>3</sup>/h  
压力范围：压力高达3000Pa  
工作温度：-20℃~40℃  
驱动形式：皮带驱动  
安装形式：座装、吊装  
使用场合：静音送排风、净化送排风

Impeller Diameter: 200~1400mm  
Air Volume Range: 1000~240000m<sup>3</sup>/h  
Pressure range: Up to 300Pa  
Working Temperature: -20℃~40℃  
Drive Type: Belt drive  
Installation Type: Seat installation, hoisting installation  
Applications: Mute ventilation, purification ventilation



浙江莱恩克风机有限公司  
ZHEJIANG LION KING VENTILATOR CO., LTD.

## LKU系列后向单进风直联驱动离心叶轮 LKU Backward Inlet Direct Drive Centrifugal Impellers



### 产品简介 Description

LKU系列后向单进风直联驱动离心叶轮具有结构紧凑、安装方便、运行可靠、噪音低、节能、高效等特点。调速范围广可适用于变频调速，变压调速等多种调速方式，产品广泛用于冷凝器、蒸发器、管道风机、屋顶风机等制冷通风行业。

LKU series of backward inlet direct drive centrifugal impellers are characterized by compact structure, easy installation, reliable operation, low noise, energy-saving, high efficiency. With wide speed range, the impellers are suitable for frequency control, variable voltage speed control and many other speed control modes. The impellers can be widely used in refrigeration and ventilation industry, such as condensers, evaporators, duct fans, roof fans etc.

### 技术参数 Specifications

叶轮直径：280~400mm  
风量范围：600~4000m<sup>3</sup>/h  
压力范围：压力高达400Pa  
驱动形式：直联驱动  
使用场合：风机配套部件

Impeller Diameter: 280~400mm  
Air Volume Range: 600~4000m<sup>3</sup>/h  
Pressure Range: Up to 400Pa  
Drive Type: Direct drive  
Applications: Subsidiary parts for ventilation equipment